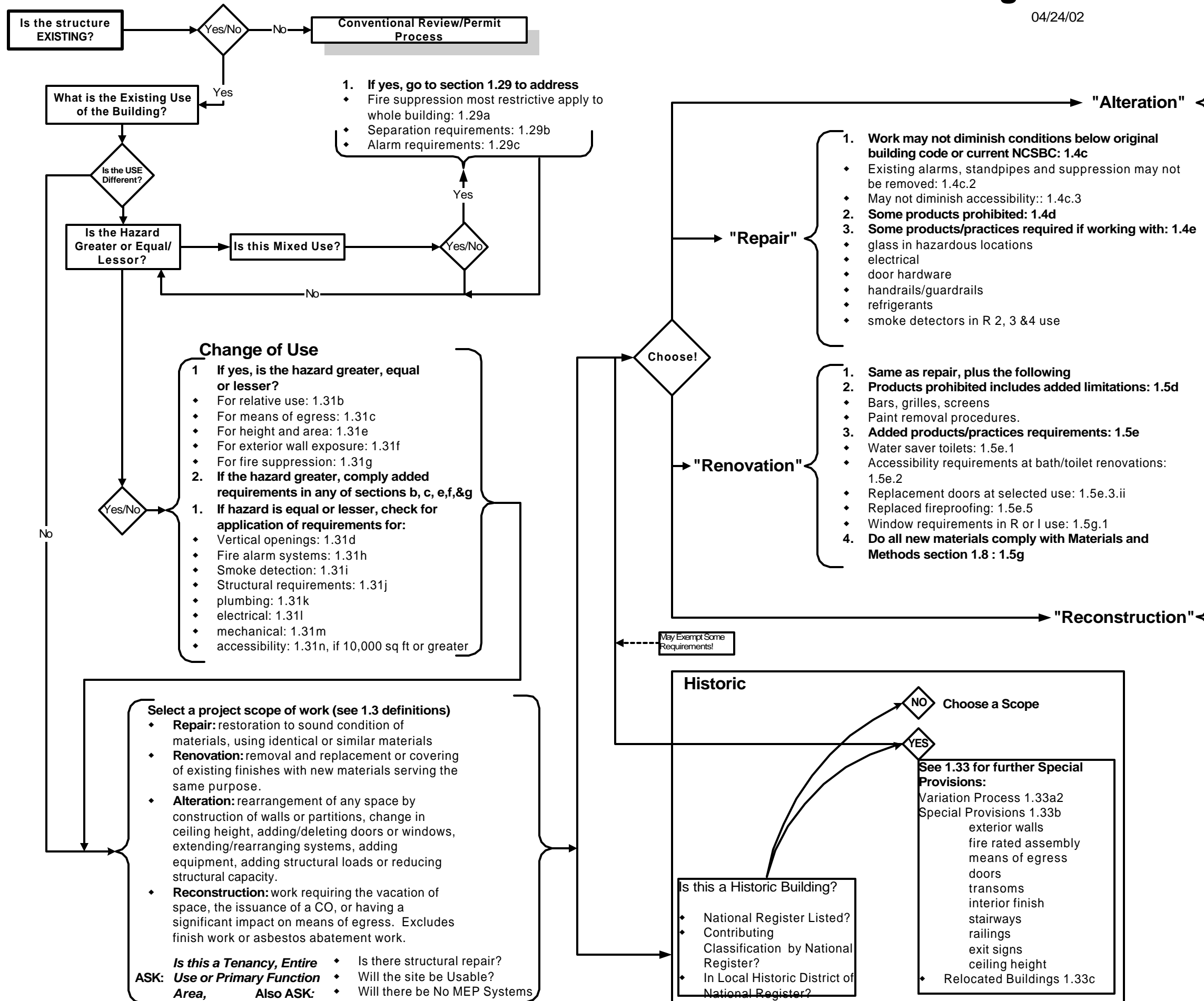


# Rehab Code: Decision Diagram

04/24/02



1. **If yes, go to section 1.29 to address**
- Fire suppression most restrictive apply to whole building: 1.29a
  - Separation requirements: 1.29b
  - Alarm requirements: 1.29c

### Change of Use

- If yes, is the hazard greater, equal or lesser?**
  - For relative use: 1.31b
  - For means of egress: 1.31c
  - For height and area: 1.31e
  - For exterior wall exposure: 1.31f
  - For fire suppression: 1.31g
- If the hazard greater, comply added requirements in any of sections b, c, e,f,&g**
- If hazard is equal or lesser, check for application of requirements for:**
  - Vertical openings: 1.31d
  - Fire alarm systems: 1.31h
  - Smoke detection: 1.31i
  - Structural requirements: 1.31j
  - plumbing: 1.31k
  - electrical: 1.31l
  - mechanical: 1.31m
  - accessibility: 1.31n, if 10,000 sq ft or greater

### Select a project scope of work (see 1.3 definitions)

- **Repair:** restoration to sound condition of materials, using identical or similar materials
- **Renovation:** removal and replacement or covering of existing finishes with new materials serving the same purpose.
- **Alteration:** rearrangement of any space by construction of walls or partitions, change in ceiling height, adding/deleting doors or windows, extending/rearranging systems, adding equipment, adding structural loads or reducing structural capacity.
- **Reconstruction:** work requiring the vacation of space, the issuance of a CO, or having a significant impact on means of egress. Excludes finish work or asbestos abatement work.

**Is this a Tenancy, Entire Use or Primary Function Area, Also ASK:**

- Is there structural repair?
- Will the site be Usable?
- Will there be No MEP Systems

### Historic

- Is this a Historic Building?
- National Register Listed?
  - Contributing Classification by National Register?
  - In Local Historic District of National Register?

- See 1.33 for further Special Provisions:
- Variation Process 1.33a2
  - Special Provisions 1.33b
    - exterior walls
    - fire rated assembly
    - means of egress
    - doors
    - transoms
    - interior finish
    - stairways
    - railings
    - exit signs
    - ceiling height
  - Relocated Buildings 1.33c

1. Same as renovation, plus the following
2. Added products/practices requirements: 1.6e
  - Do accessibility requirement provisions for technically infeasible apply : 1.6e.2 iii
  - Is accessible entrance work in excess of 20% disproportionate cost: 1.6e.4.
  - Allows limited use of platform lifts: 1.6e5
  - Does the work performed create a bedroom, living space or other habitable space? 1.6e.9, 1.6e.10, 1.6e.11, 1.6e.12
3. Work may not make the building less conforming with Basic Requirements: 1.6g
  - If the Basic Requirements are exceeded, may not decrease below NCSBC : 1.6g.1
4. Do all new building elements comply with section 1.9? : 1.6i
5. Regarding accessibility, is the altered space a primary function space? 1.6j
  - Is accessible path of travel work in excess of 20% disproportionate cost: 1.6j

1. Same as alteration, plus the following
2. Added products/practices requirements: 1.7e
  - Any new entrance steps shall provide a ramp, unless the work is in excess of 20% disproportionate cost: 1.7e.4.
  - Does the work performed create a habitable space with a ceiling height at 7ft minimum? 1.7e.9
3. Does the work area comply with the Basic Requirements for the specified use: 1.7h, and
4. Does the scope of work trigger the specified use supplemental requirements:
  - Use group A-1 Basic Requirements: 1.12 Supplemental Requirements: 1.12A
  - Use group A-2 Basic Requirements: 1.13 Supplemental Requirements: 1.13A
  - Use group A-3 Basic Requirements: 1.14 Supplemental Requirements: 1.14A
  - Use group A-4 Basic Requirements: 1.15 Supplemental Requirements: 1.15A
  - Use group A-5 Basic Requirements: 1.16 Supplemental Requirements: 1.16A
  - Use group B Basic Requirements: 1.17 Supplemental Requirements: 1.17A
  - Use group E Basic Requirements: 1.18 Supplemental Requirements: 1.18A
  - Use group F Basic Requirements: 1.19 Supplemental Requirements: 1.19A
  - Use group H Basic Requirements: 1.20 Supplemental Requirements: 1.20A
  - Use group I-1 Basic Requirements: 1.21 Supplemental Requirements: 1.21A
  - Use group I-2 Basic Requirements: 1.22 Supplemental Requirements: 1.22A
  - Use group I-3 Basic Requirements: 1.23 Supplemental Requirements: 1.23A
  - Use group M Basic Requirements: 1.24 Supplemental Requirements: 1.24A
  - Use group R-1 Basic Requirements: 1.25 Supplemental Requirements: 1.25A
  - Use group R-2 Basic Requirements: 1.26 Supplemental Requirements: 1.26A
  - Use group R-3/R-4 Basic Requirements: 1.27 Supplemental Requirements: 1.27A
  - Use group S Basic Requirements: 1.28 Supplemental Requirements: 1.28A
  - Check Special Technical Requirements 1.30